

# Fire Roller Shutter Doors

LPS1056 Certified, up to 4 hour fire rated

Retail

Industrial

Commercial



**ascot**  
DOORS

made to measure

66 mm aluminium leaf shutter

STAGING AREA PACKING LINE 4



# Retail, Commercial & Industrial Fire Shutters

Welcome to Ascot Doors Limited, manufacturer and installer of individually made-to-measure high performance fire roller shutter doors.

## Made to measure

Ascot Doors offer the complete service from design, manufacture & installation to on-going service and emergency repairs.

Together with powder coating technology the highest quality standards are applied, not only in its products, but in peoples daily work processes.

Unrivalled aesthetics and performance have become the hallmark of Ascot's fire shutters in all applications from retail and warehousing to industrial units and factories.

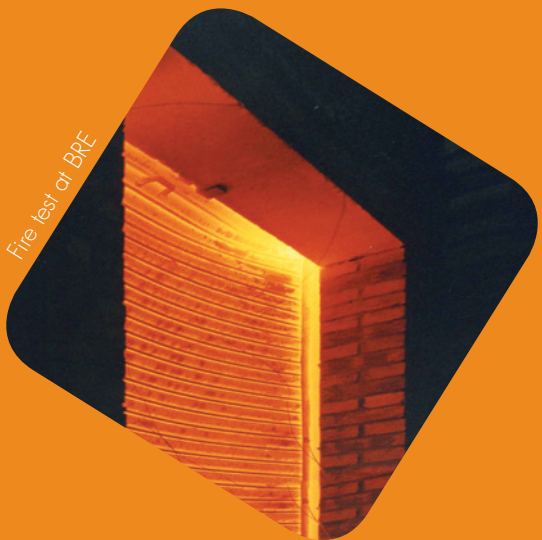
Installation teams undergo rigorous training to ensure that doors are installed in accordance with LPS1197 where appropriate, and in all cases, in the most effective and safest manner possible.

Based in Bolton, UK, Ascot manufactures it's made to measure shutters in it's own purpose built factories using the latest production equipment under BS ISO 9001 quality assurance.

Recognised internationally for high levels of quality and safety, Ascot produces doors for UK, and overseas customers.

For non-fire rated or LPS 1175 high security shutters please refer to specific brochures.

warehouses  
supermarkets  
local authorities  
public buildings  
utilities & factories  
distribution centres  
hospitals & museums  
waste handling stations  
retail & shopping centres



Introduction & fixing arrangements	1
Shutter construction & options	2
Manual push-up (self coiling)	3
Hand-chain & electric drive	4
Service and repair	5



ISO 9001 / ISO 18001



Certificate No. 131/b  
Certificate No. 131/d



BRE cert. TE 84510



fire door TEVA Pharmaceuticals

# Fire Roller Shutters

Ascot Fire Shutters combine strength and durability with cost effectiveness.

Highly versatile and cost effective, Ascot Fire Shutters are individually designed and manufactured to suit the specific opening, are made from high performance interlocking laths and a tee section bottom rail

running in side channels and fixed to the structure. The curtain is hung from a high level barrel and rotates on high quality bearings. A polyester powder coat to most BS or RAL colours is available as an option.

Our range of Fire Roller Shutter doors have been designed to comply with the requirements of section 8 BS 476 : Part 22 : 1987 as tested tested by BRE Fire Research Centre No. TE 84510 with LPCB approval and certification for up to four hours fire protection.

## Modes of Operation

Self coiling (manual push-up) is ideal for smaller openings and does not need a power supply. Electric drive shutters also have a hand chain so that operation can be made in the event of power failure.

## Guide fixing arrangements

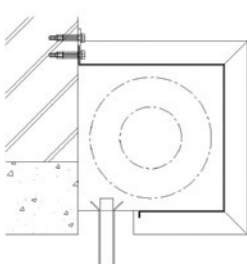
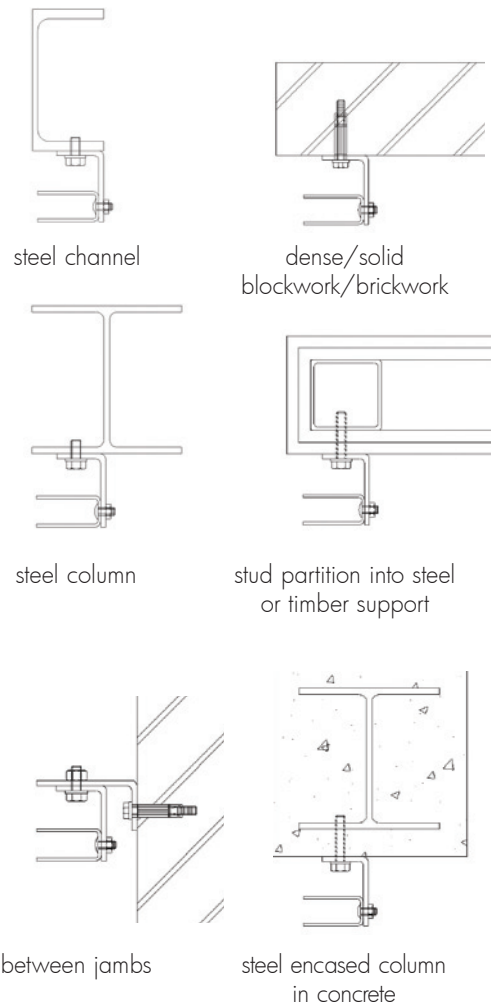
Approved installation teams fit Ascot shutters to a variety of buildings and construction materials. Shutters are installed to most type of wall or openings using a combination of fixings.

Fixings are calculated for every location and torques specified for individual bolt-sets within our fixing instructions. Recommended bolt sizes for fixing the door to the opening structure are calculated.

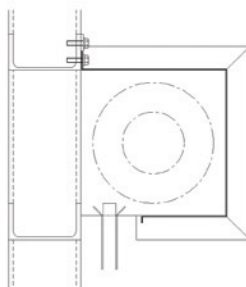
## Head fixing arrangements

Ascot Doors have various head fixing arrangements approved to allow installation to most construction configurations. A selection of the most popular are shown below:-

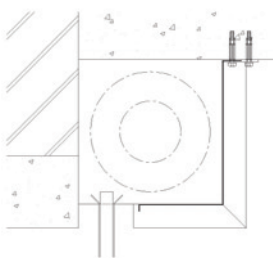
## Fixings to suit any type of construction material



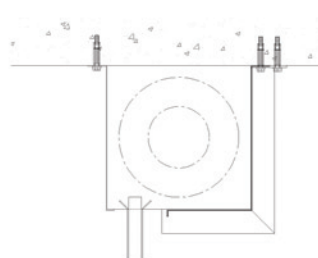
dense/solid brickwork/blockwork



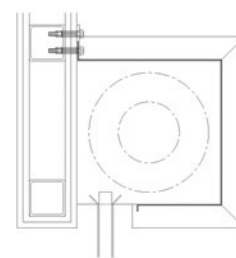
steelwork (fire rated fascia by others)



concrete



concrete and blockwork



stud partition into steelwork or timber

# Shutter Construction

## Curtains

Shutter curtains are constructed from 76 mm traditional curved laths with a standard tee bottom rail. All curtains are securely held using cast end locks to suit the curtain configuration, which prevents lateral movement.

## Guides

Formed from rolled steel, vertical guides are specified according to the size of opening. They are supplied with suitable angles for fixing to the structure.

## Endplates

Steel endplates of appropriate thickness to accept the barrel and curtain assembly are completed with machine cut 'U' supports relative to door size and are supplied with angles for fixing to the structure.

## Barrel

The barrel is constructed from high quality steel tube of varying diameters and wall thickness. Exact dimensions are dependant upon overall door width and height. The barrel also contains a bright steel shaft with a minimum diameter of 25 mm up to a maximum of 80 mm. The counter balance spring arrangement is captivated by using a combination of machined blocks and bearings. The barrel is fully supported on mild steel cups that are securely attached to the endplate assembly.

## Hood (coil casing)

A profiled galvanised sheet steel hood is included as standard. An optional fascia can be fitted where required. A hood support bracket may be required, this depends on the fire rating and the size of the opening.

## Fusible Link Release

A local heat source in excess of 68° C activates a fusible link (mounted to the underside of the hood) releasing the motor brake allowing the shutter to close.

## Solenoid release linking to fire alarm (optional)

A solenoid can be incorporated which can be linked into the fire alarm (by others) using a 24 volt DC supply. On receipt of an incoming fire alarm signal the door will close under controlled descent. Note, if the signal from the fire alarm is volt-free an audio-visual warning panel will be required.

## Audio Visual Warning panel (optional)

An audio and visual warning is activated when the panel receives a fire alarm signal. The unit also includes a facility to allow delayed closing of the shutter. The fire alarm signal (24 V DC or volt free) is connected directly into this unit. On activation from the fire alarm, the unit starts to flash and omit an audible warning with the shutter closing after a pre-determined delay (10 - 240 seconds).

## Options

- Audio-visual panel with in-built time delay
- Battery back-up facility where maintained power is required
- Manual reset solenoid can be upgraded to reset electronically
- Fusible link back-up available on electrical reset solenoid
- Key-switch control
- Galvanised sheet steel fascia
- Polyester powder coated finish in a range of standard BS or RAL colours
- Motor hood (always included if under 2500 mm high)
- Smoke seals to guides, bottom rail and soffitt
- Part close facility using audio visual warning panel. Shutter acts as a smoke curtain with full closure after pre-set delay. (Shutter MUST have a maintained power supply to accomodate this function)



Guide & Angle Section



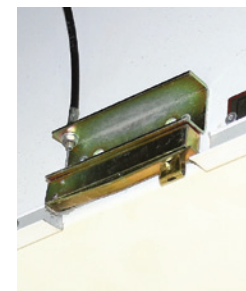
Guide & Bottom Rail Interface



Standard endplate



Hood (coil casing) & support brackets



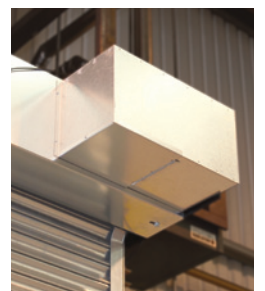
Fusible link release



Solenoid pic here



Audio visual warning panel



Motor hood



# Manual Push-up (self coiling)

Push-up operation is suitable for smaller openings where frequency of operation is limited. The shutter will close automatically by fusible link at 68° C by means of a weight bar under gravity and is typically used on smaller openings such as doorways, windows, serveries or bars.

Ascot recommend that shutters exceeding 2500 mm x 2500 mm should be hand chain or electrically operated. Installation of these products may be subject to a site specific risk assessment.

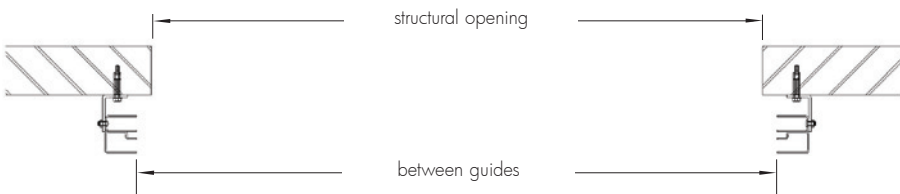
Low cost option  
No electrical supply needed  
Ideal for confined areas

Head space requirements			
opening height mm	A mm	B mm	C mm
up to 2000	250	250	50
up to 3000	300	300	50

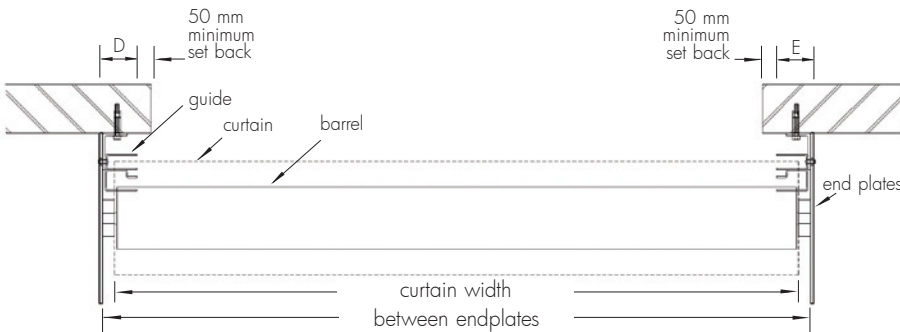
Space requirements on plan		
opening width mm	D mm	E mm
up to 3000	75	75

Maximum size 3000 x 3000

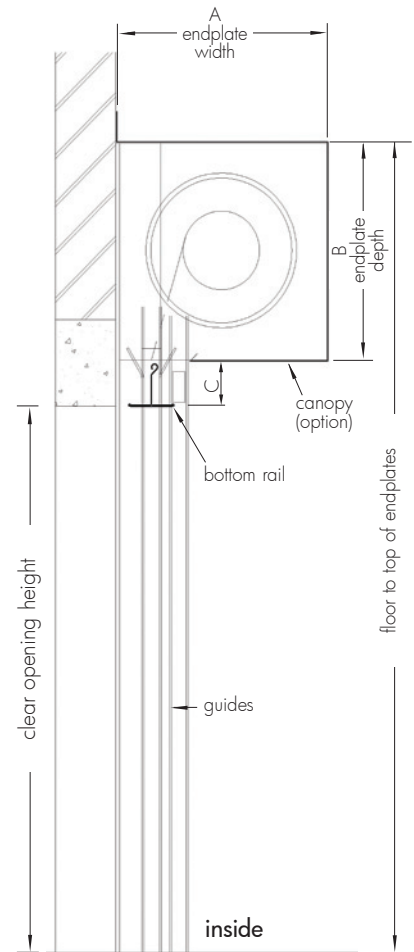
Note. Shutter shown fitting to brickwork, for other fixing arrangements see page 1



plan at guide level



plan at barrel level



section



# Hand Chain & Electric Drive

## Chain operated

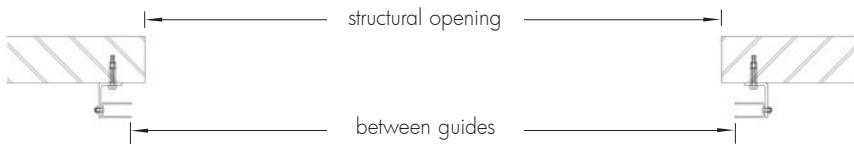
As standard, manual operation is by means of a continuous galvanised haul chain. The shutters will close automatically by fusible link under a controlled decent gear box when 68 degrees C is reached. Hand chain driven shutters are slow to operate, we would only recommend chain operation where shutters are used infrequently.

## Electrically operated shutters

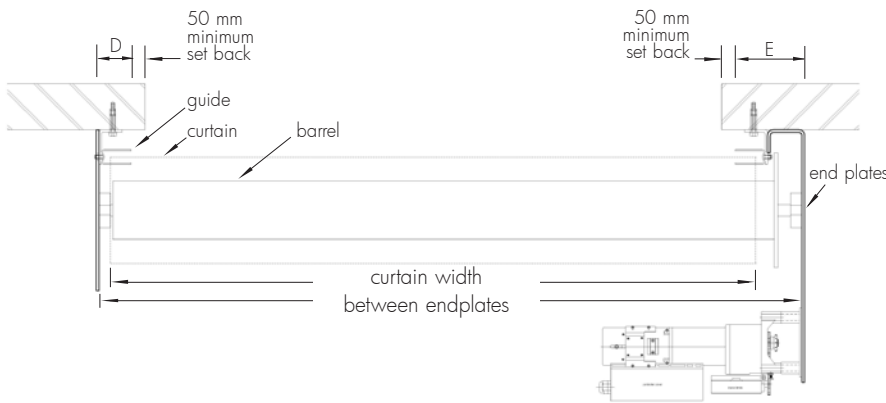
Suitable for all sizes of shutter, the motor is either single phase (240 Volt, 50 Hz) or 3 phase (415 Volt, 50 Hz) dependant on size of door or customers requirement. A controlled descent of 100mm per second (approx.) is an inbuilt safety feature. In the event of power failure, manual override is achieved by pulling a pull cord to close the shutter under controlled descent and a hand chain to open. The handchain override is designed for emergency use only. As standard each shutter will include an open/stop/close push button station mounted on the motor side at approximately 1500mm above the finished floor allowing sight of the shutter during normal operation. Other control options are available on request. We strongly recommend that shutters exceeding 16 metres square should be electrically operated.

Maximum size  
Chain operated 4000 x 4000  
Power operated 7000 x 7000  
Individual assessments available  
for larger openings

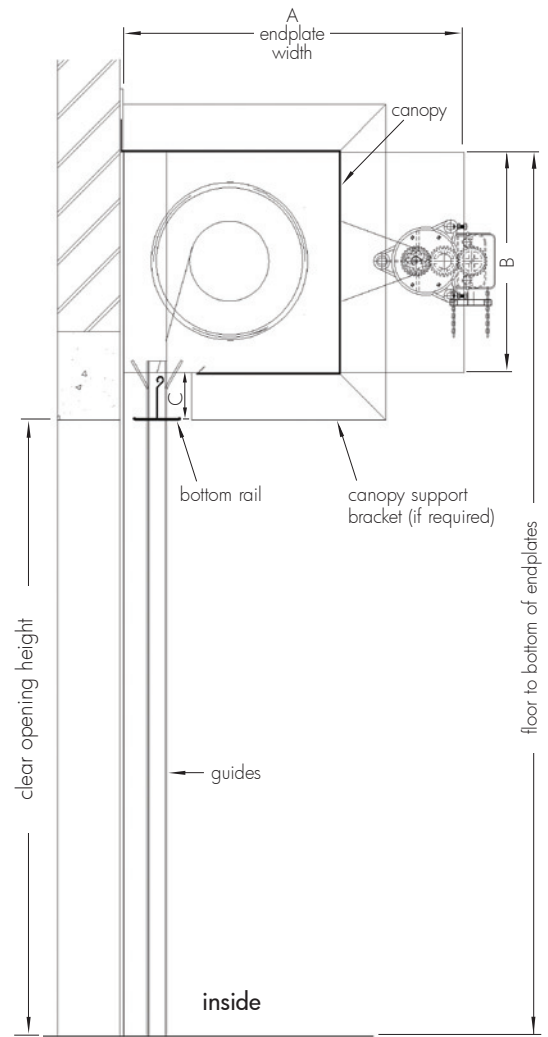
Head space requirements				Space requirements on plan		
opening height mm	A mm	B mm	C mm	opening width mm	D mm	E mm
up to 4500	600	400	75	up to 6500	100	175
up to 6500	650	450	75	over 6500	125	200
up to 7000	700	500	75			



plan at guide level



plan at barrel level



section

# Ascot Service and Repair

Fast and reliable for peace of mind. To ensure your doors are maintained in good working order, our UK-wide network of Service Centres are strategically placed to provide the fastest possible response time. If you have a breakdown our stocked service vans can be at your site fixing your door, FAST!

## Service

Our nationwide service centre network attend scheduled maintenance visits and on-site repairs. Emergency repairs are often attended within 4 hours. With over 25 years experience manufacturing, installing and repairing doors and 11 service centres, Ascot is the ideal partner you can rely on to maintain your industrial, commercial and retail doors.

## Repairs

Damaged doors cause downtime to operations, whether it's people traffic or moving goods in and out of buildings. Business today is moving faster, damage and malfunctions must be repaired quickly and professionally by trained technicians. Whether it's one of our doors or another make, Ascot Service and Repair can fix it.

## Maintenance agreements

A maintenance agreement offers regular service levels to make sure the frequency of door usage is maintained and to diagnose problems before failure and disturbance to traffic flows occur. Planned regular maintenance increases functionality and reduces expensive downtime.

## Upgrades and replacements

In time, your door requirements will change. Improvements in operations and technology will place greater demands on movements in and out of buildings. Whether it's moving or resizing doors, changing or adding safety and security features, the Ascot Service and Repair team can handle it.

## Spare parts

A comprehensive spare parts distribution network, together with well stocked service vans means we get engineers and parts to your site within 24 hours of ordering.



contact service:  
01204 309 908  
[service@ascotdoors.co.uk](mailto:service@ascotdoors.co.uk)



## Construction Skills Certification Scheme

CSCS was set up to help the construction industry to improve quality and reduce accidents. Ascot service and repair technicians hold CSCS cards which are increasingly demanded as proof of occupational competence by contractors, public and private clients and others.



new door enquiries  
01204 545 801

24/7 service hotline  
01204 309 908

## service centres

### North East

Unit 1 C, Dean & Chapter Industrial Estate  
Ferryhill, COUNTY DURHAM DL17 8LN  
Tel: 01740 657 171  
Fax: 01740 657 931

### Scotland

Unit 59, Evans Business Centre, Bellshill Ind. Est.  
BELLSHILL, Lanarkshire ML4 3NP  
Tel: 01698 574 540  
Fax: 01698 748 625

### North West

Unit 1, Viola Street, Astley Bridge  
BOLTON BL1 8NG  
Tel: 01204 309 908  
Fax: 01204 300 532

### Yorkshire

Unit 20, Grange Lane Industrial Estate,  
Stairfoot, BARNSLEY S71 5AS  
Tel: 01226 246 667  
Fax: 01226 248 271

### West Midlands

Unit 18, (D), Wednesbury Trading Estate,  
Wednesbury, BIRMINGHAM WS10 7JN  
Tel: 0121 502 5934  
Fax: 0121 502 5931

### Midlands

Unit 7 Oaks Industrial Estate,  
Coalville, LEICESTER LE67 3NQ  
Tel: 01530 817 682  
Fax: 01530 817 680

### South Central

Unit 2, Lennox Industrial Mall, Lennox Road,  
BASINGSTOKE RG22 4DF  
Tel: 01256 322 566  
Fax: 01256 353 002

### East Anglia

Unit G3, Seedbed Centre, Wyncolls Road,  
COLCHESTER CO4 9HT  
Tel: 01206 843 413  
Fax: 01206 843 319

### South West

Unit 21, Blake Mill Business Park,  
Brue Avenue, BRIDGWATER TA6 5LT  
Tel: 01278 439 313  
Fax: 01278 439 200

### London

Unit L, The Business Centre, Faringdon Avenue,  
Harold Hill, ROMFORD RM3 8EN  
Tel: 01708 386 900  
Fax: 01708 386 886

### South East

Unit 36, Thomas Way, Lakesview Business Park,  
Hersdon, CANTERBURY CT3 4JZ  
Tel: 01227 711 757  
Fax: 01227 713 786



head office  
**Ascot Doors Limited**  
Britannia Way Industrial Park  
Union Road, Bolton BL2 2HE  
Tel: 01204 545 801  
Fax: 01204 545 800

[www.ascotdoors.co.uk](http://www.ascotdoors.co.uk)  
[sales@ascotdoors.co.uk](mailto:sales@ascotdoors.co.uk)

