

Ascot Doors Ltd Fire Shutter Range

Including:

FS01 - A220 to A222 Fire Shutter Data Sheet

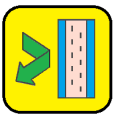
FS02 - A225 to A227 Fire Shutter Data Sheet

FS03 - A234 to A236 Fire Shutter Data Sheet

Coding Of Fundamental Properties:



Fire Resisting



Insulated



Enhanced Acoustic Performance



Ascot A200 Series Electrically Operated Tube Motor Steel Fire Resisting Rolling Shutter

Model Reference A200-A220-E-TM-E60-76-SS-0
60 Minute Fire Integrity

Model Reference A200-A221-E-TM-E120-76-SS-0
120 Minute Fire Integrity

Model Reference A200-A222-E-TM-E240-76-SS-0
240 Minute Fire Integrity

Applicable Fixing Structures

- Rigid (Masonry, Steel, Concrete)
- Protected Structural Steel

Performance Characteristics

Tested in accordance with *BS EN 1634-1 2014+A1:2018 Fire Resistance Test for Doors & Shutters*

Warringtonfire report No.427370

Assessed against *BS EN 15269-10:2011 Extended Application Of Test Results For Fire Resistance of Steel Rolling Shutters*

Extended Application report No.417215

Classified in line with *BS EN 13501-2:2016 Fire Classification Of Construction Products & Building Elements*

Classification Report No.417216

The fire shutters are fully compliant to *BS EN 13241:2013+A2:2016* and *BS EN 16034:2014*

A220 - Fire resistance to E60 classification

A221 - Fire resistance to E120 classification

A222 - Fire resistance to E240 classification



warringtonfire



Ascot Doors Ltd is one of the leading suppliers of industrial door products in today's market place specialising in Rolling Shutters, Fire Shutters, Fire Curtains, Hinged Doors, Sectional Overhead Doors, Dock Levelling Systems and offering a complete service ranging from design and manufacture through to installation. Ascot Doors Ltd operate in both the UK and across the world.

Fire Shutters offer a solution to achieving a fire rated compartmentation between adjacent areas achieving up to 60, 120 or 240 minutes fire integrity as required.

Electrical Operation - Via a 240v tube motor mounted within the barrel c/w limit switches and a key switch. Emergency hand operation is provided as standard via a manual eyelet for crank handle operation in the event of a power or mechanical failure. Safety brake anti fall back devices and fully complies with BS EN 12604:2000, BS EN 12453:2001 European directives for machinery.

Automatic Closure - Client's fire alarm signal is connected to a normally open volt-free contact within the supplied Promate control panel (wiring is by others). Closure in the fire condition is via mains power. A UPS battery backup is supplied as standard to ensure closure via the fire alarm is achieved in the event of a mains power failure.

Barrel Assembly – Constructed from steel tube manufactured to BS EN 10219 and mounted on a steel shaft. Tube and shaft sized according to opening size and door weight.

Curtain – Constructed from minimum 0.9mm Thick x 76mm deep curved galvanized steel interlocking lath manufactured to BS EN 10346 with a protective zinc coating of 275g/m² to form a single skin curtain. Each alternate lath is fitted with malleable iron endlocks to prevent lateral movement and the curtain is finished with a 1.6mm galvanized 'T' section bottom rail.

Endplates – Constructed from mild steel of adequate size and thickness relative to the size of the door.

Guides - Constructed from minimum 2.5 x 65mm deep galvanized steel channels bolted to a minimum 75 x 50 x 5mm galvanized angle.

Hood - Supplied as standard to cover the barrel and manufactured from 0.9mm thick pressed galvanized steel to BS EN 10346 with a protective zinc coating of 275g/m².

Finish - Galvanized parts to BS EN 10142 with a protective hot dipped zinc coating of 275g/m² finished to a normal spangle with one coat black primer paint on non-galvanized surfaces.

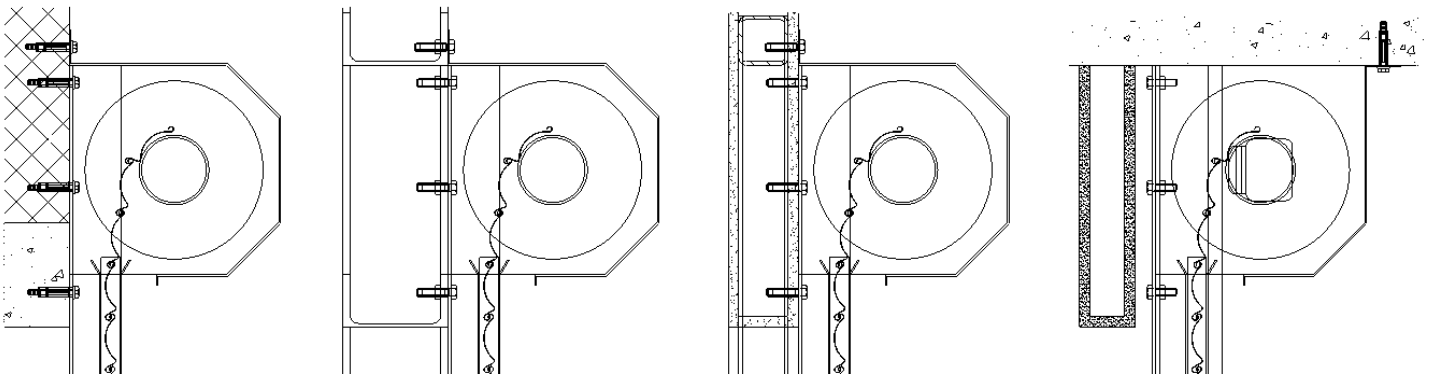
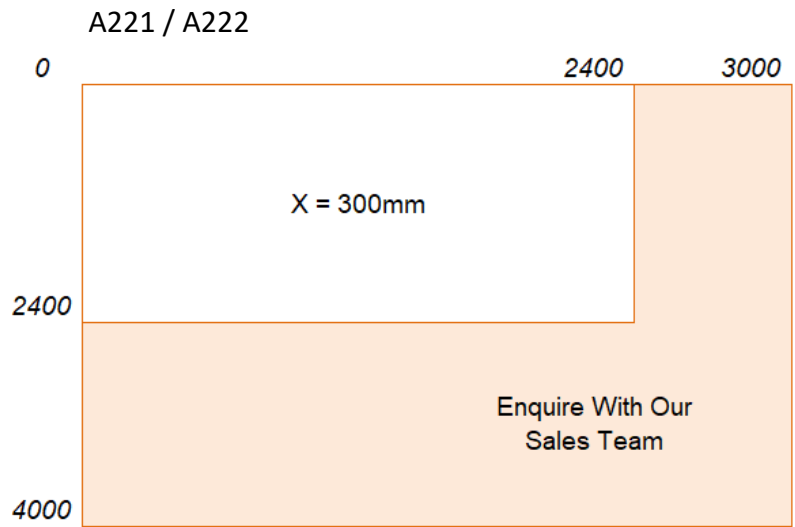
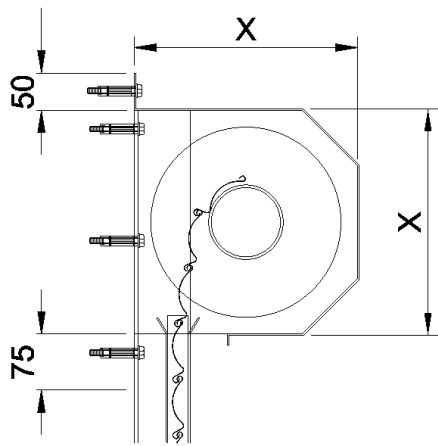
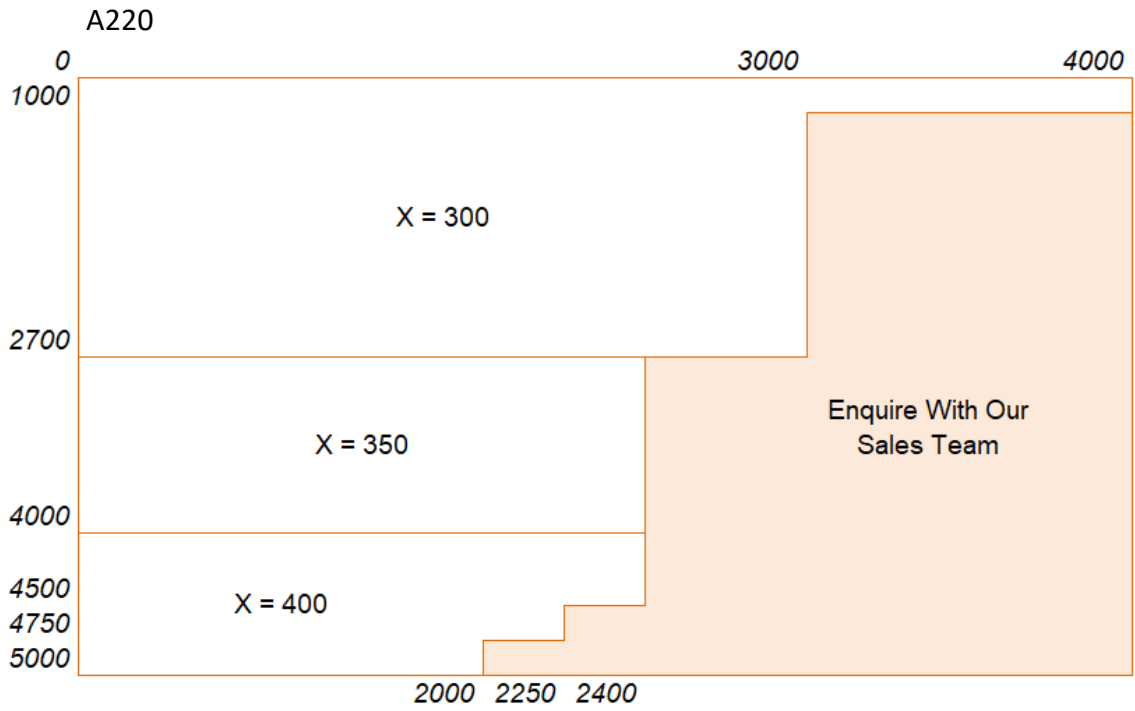
Optional Additional Extras -

- Fascia
- Audio visual warning device
- Smoke / Heat Detector
- Two stage descent
- Test key switch
- Reflective photocell
- Emergency retract button

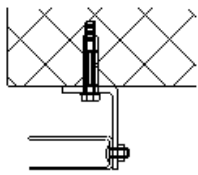
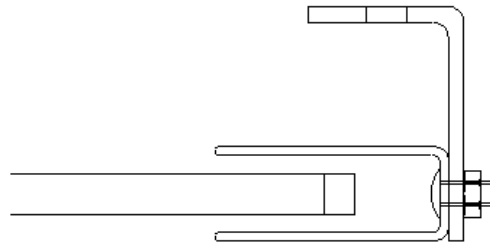
- Powder coating to our standard RAL or BS range to Guides, Bottom Rail & Headbox



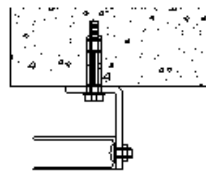
Head Box Detail



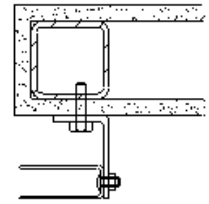
Jamb Guide Detail



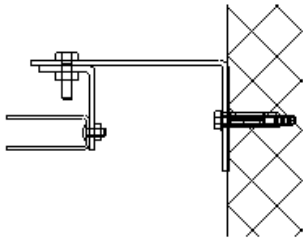
Masonry



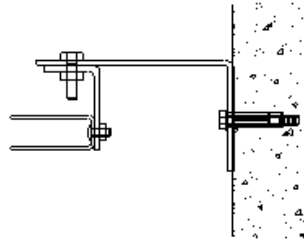
Concrete



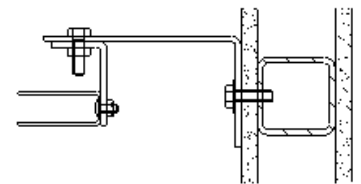
Fire Rated Plasterboard
c/w Internal Steel Post



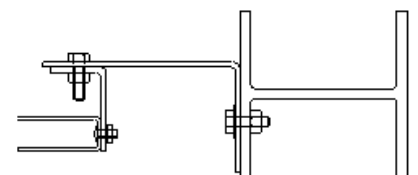
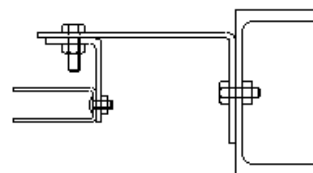
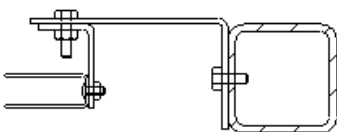
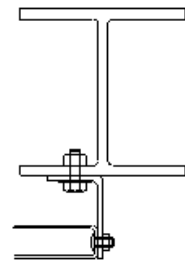
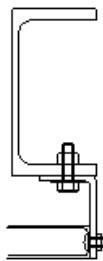
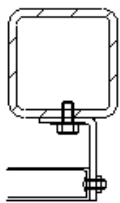
Hollow Section



Parallel Flange
Channel



Universal Column



**** Structural supporting steelwork must be fire protected in line with the required rating of the fire shutter ****

Data Sheet: A200 - FS02

Ascot Doors Limited

Britannia Way Industrial Park

Union Road, Bolton, BL2 2HE

☎ 0120 454 5801

✉ sales@ascotdoors.co.uk

🌐 www.ascotdoors.co.uk



Ascot A200 Series Electrically Operated Steel Fire Resisting Rolling Shutter

Model Reference A200-A225-E-CD-E60-76-SS-0
60 Minute Fire Integrity

Model Reference A200-A226-E-CD-E120-76-SS-0
120 Minute Fire Integrity

Model Reference A200-A227-E-CD-E240-76-SS-0
240 Minute Fire Integrity

Applicable Fixing Structures

- Rigid (Masonry, Steel, Concrete)
- Protected Structural Steel

Performance Characteristics

Tested in accordance with *BS EN 1634-1 2014+A1:2018 Fire Resistance Test for Doors & Shutters*

Warringtonfire report No.437694

Assessed against *BS EN 15269-10:2011 Extended Application Of Test Results For Fire Resistance of Steel Rolling Shutters*

Extended Application report No.501951

Classified in line with *BS EN 13501-2:2016 Fire Classification Of Construction Products & Building Elements*

Classification Report No.501952

The fire shutters are fully compliant to *BS EN 13241:2013+A2:2016* and *BS EN 16034:2014*

A225 - Fire resistance to E60 classification

A226 - Fire resistance to E120 classification

A227 - Fire resistance to E240 classification



warringtonfire



Ascot Doors Ltd is one of the leading suppliers of industrial door products in today's market place specialising in Rolling Shutters, Fire Shutters, Fire Curtains, Hinged Doors, Sectional Overhead Doors, Dock Levelling Systems and offering a complete service ranging from design and manufacture through to installation. Ascot Doors Ltd operate in both the UK and across the world.

Fire Shutters offer a solution to achieving a fire rated compartmentation between adjacent areas achieving up to 60, 120 or 240 minute fire integrity as required.

Electrical Operation - Via a 230v, 1ph or 400v, 3ph, 50Hz geared motor unit complete with integral controlled descent auto reset solenoid and fusible link release mechanism designed to close the shutter automatically when the local temperature exceeds 68°C. An Up/Down/Stop push button is provided along with emergency hand chain override. A safety brake anti fall back device is fitted on the opposite end to the motor and fully complies with BS EN 12604:2000, BS EN 12453:2001 European directives for machinery.

Barrel Assembly - Constructed from steel tube manufactured to BS EN 10219 with discs and shafts at each end. The motor end has a plate wheel for connecting to the motor via a drive chain. Tube and shaft sized according to opening size and door weight.

Curtain - Constructed from minimum 0.71mm Thick x 76mm deep curved galvanized steel interlocking lath manufactured to BS EN 10346 with a protective zinc coating of 275g/m² to form a single skin curtain. Each alternate lath is fitted with malleable iron endlocks to prevent lateral movement and the curtain is finished with a 1.6mm galvanized 'T' section bottom rail.

Endplates - Constructed from galvanized / mild steel of adequate size and thickness relative to the size of the door.

Guides - Constructed from minimum 2.5 x 65mm deep galvanized steel channels bolted to a minimum 75 x 50 x 5mm galvanized angle.

Hood - Supplied as standard to cover the barrel and manufactured from 0.9mm thick pressed galvanized steel to BS EN 10346 with a protective zinc coating of 275g/m².

Finish - Galvanized parts to BS EN 10142 with a protective hot dipped zinc coating of 275g/m² finished to a normal spangle with one coat black primer paint on non-galvanized surfaces.

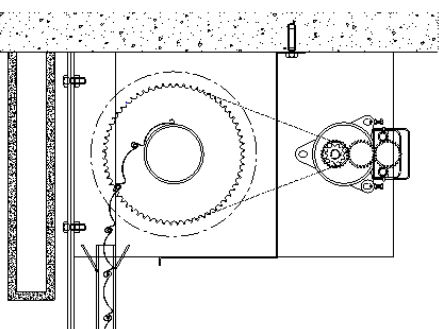
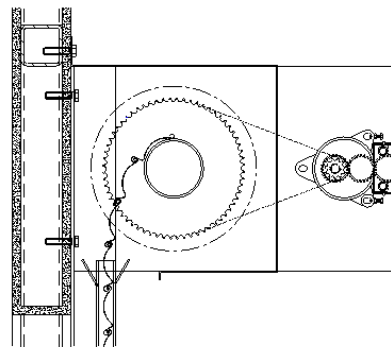
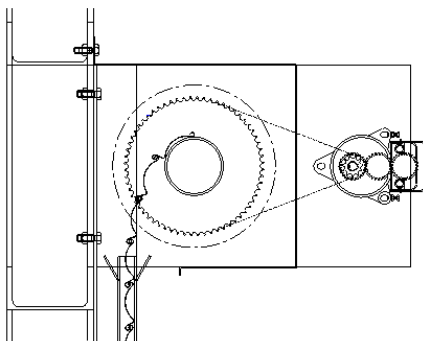
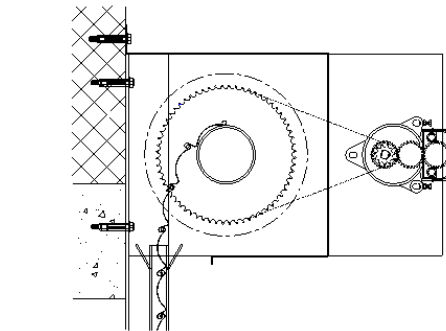
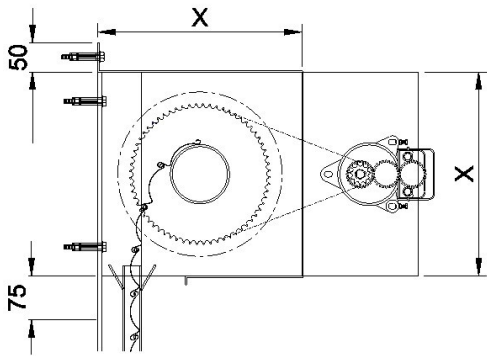
Optional Additional Extras -

- Fascia
- Motor hood (supplied as standard on all fire shutters under 2500mm high)
- Audio visual warning panel
- Repeater panel
- Two stage descent
- Smoke or heat detector
- Key switch
- Reflective photocell
- Emergency retract button

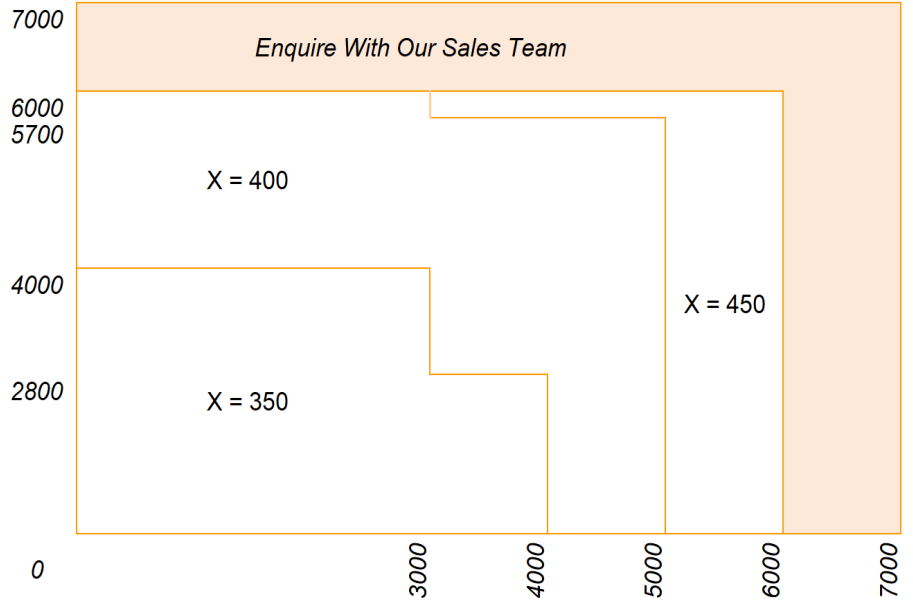
- Powder coating to our standard RAL or BS range to curtain, guides, bottom rail and hood



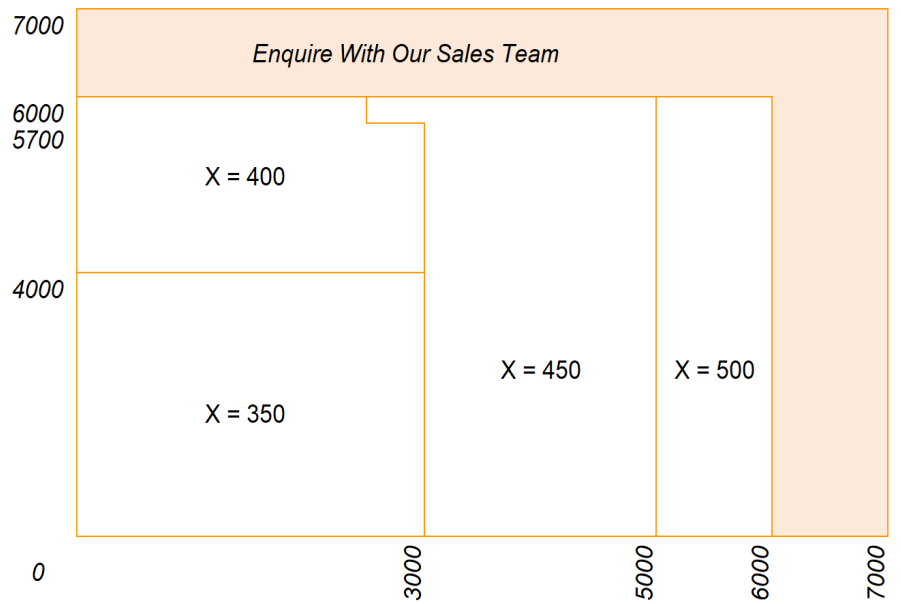
Head Box Detail



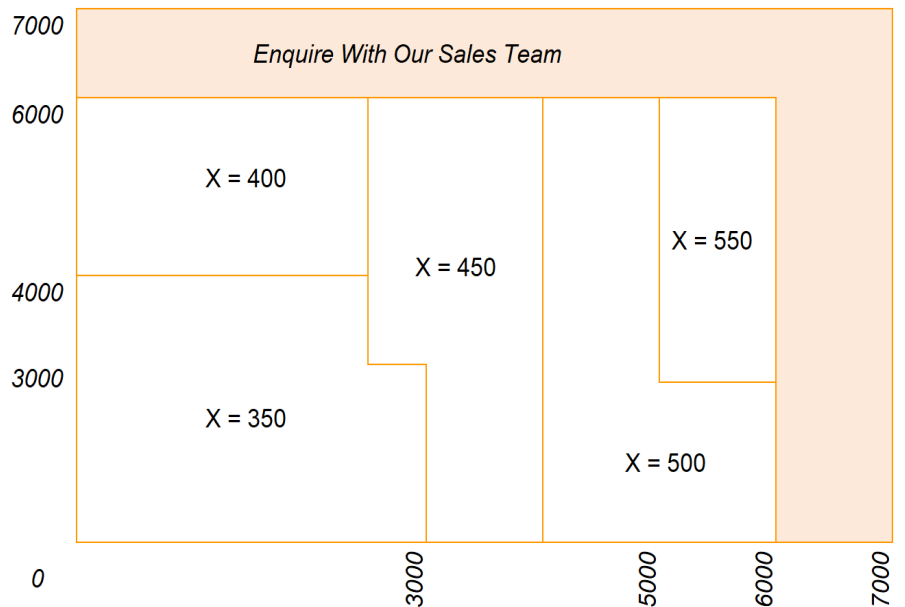
A225



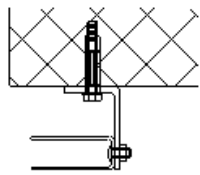
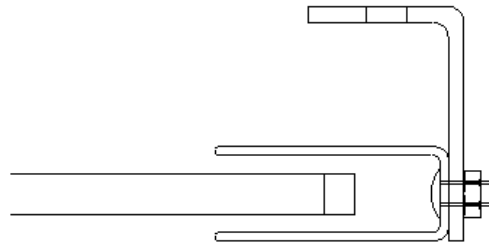
A226



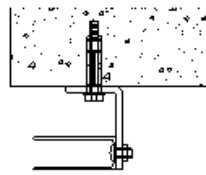
A227



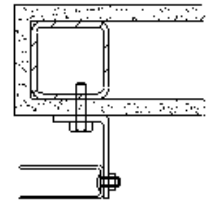
Jamb Guide Detail



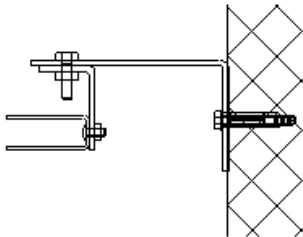
Masonry



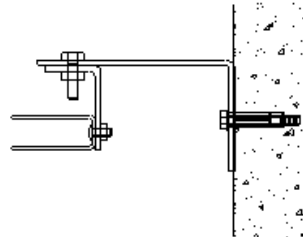
Concrete



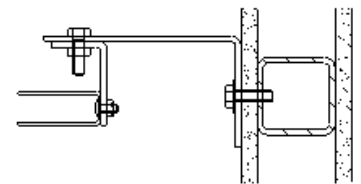
Fire Rated Plasterboard
c/w Internal Steel Post



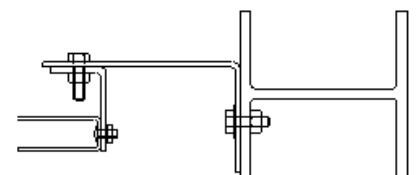
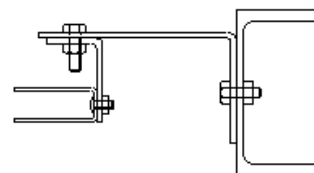
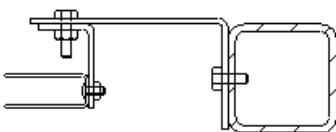
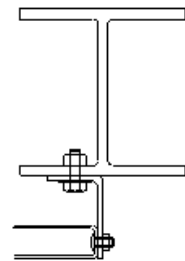
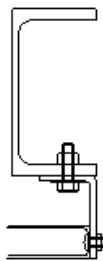
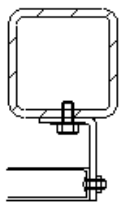
Hollow Section



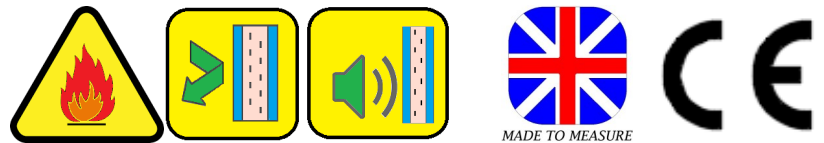
Parallel Flange
Channel



Universal Column



**** Structural supporting steelwork must be fire protected in line with the required rating of the fire shutter ****



MADE TO MEASURE

Ascot A200 Series Electrically Operated Insulated Steel Fire Resisting Rolling Shutter

Model Reference A200-A234-E-CD-EW60-85-DS-SW
60 Minute Fire Integrity / 60 Minute Radiation Control

Model Reference A200-A235-E-CD-EW120-85-DS-SW
120 Minute Fire Integrity / 120 Minute Radiation Control

Model Reference A200-A236-E-CD-EW240-85-DS-SW
240 Minute Fire Integrity / 120 Minute Radiation Control

Applicable Fixing Structures

- Rigid (Masonry, Steel, Concrete)
- Protected Structural Steel

Performance Characteristics

Tested in accordance with *BS EN 1634-1 2014+A1:2018 Fire Resistance Test for Doors & Shutters*

Warringtonfire report No.504486

Assessed against *BS EN 15269-10:2011 Extended Application Of Test Results For Fire Resistance of Steel Rolling Shutters*

Extended Application report No.508984

Classified in line with *BS EN 13501-2:2016 Fire Classification Of Construction Products & Building Elements*

Classification Report No.508985

The fire shutters are fully compliant to *BS EN 13241:2013+A2:2016* and *BS EN 16034:2014*

A234 - Fire resistance to E60 - W60 classification

A235 - Fire resistance to E120 - W120 classification

A236 - Fire resistance to E240 - W120 classification



warringtonfire



Ascot Doors Ltd is one of the leading suppliers of industrial door products in today's market place specialising in Rolling Shutters, Fire Shutters, Fire Curtains, Hinged Doors, Sectional Overhead Doors, Dock Levelling Systems and offering a complete service ranging from design and manufacture through to installation. Ascot Doors Ltd operate in both the UK and across the world.

Insulated Fire Shutters offer a solution to achieving a fire rated compartmentation between adjacent areas achieving up to 60, 120 or 240 minute fire integrity with 60 or 120 minute radiation control as required. The Superwool™ infill helps to achieve an enhanced acoustic performance (NPD).

Electrical Operation - Via a 230v, 1ph or 400v, 3ph, 50Hz geared motor unit complete with integral controlled descent auto reset solenoid and fusible link release mechanism designed to close the shutter automatically when the local temperature exceeds 68°C. An Up/Down/Stop push button is provided along with emergency hand chain override. A safety brake anti fall back device is fitted on the opposite end to the motor and fully complies with BS EN 12604:2000, BS EN 12453:2001 European directives for machinery.

Barrel Assembly - Constructed from steel tube manufactured to BS EN 10219 with discs and shafts at each end. The motor end has a plate wheel for connecting to the motor via a drive chain. Tube and shaft sized according to opening size and door weight.

Curtain - Constructed from minimum 0.7mm Thick x 85mm double skin galvanized steel interlocking lath manufactured to BS EN 10346 with a protective zinc coating of 275g/m² to form a double skin curtain. Each section has a ribbed face for increased rigidity. Every lath is fitted with a galvanized steel endlock to prevent lateral movement and the curtain is finished with a galvanized 'U' Section Bottom Rail. The curtain is filled with Superwool™ to aid thermal and acoustic performance

Endplates - Constructed from galvanized / mild steel of adequate size and thickness relative to the size of the door.

Guides - Constructed from minimum 2.5 x 75mm deep galvanized steel channels bolted to a minimum 100 x 50 x 5mm galvanized angle.

Hood - Supplied as standard to cover the barrel and manufactured from 0.9mm thick pressed galvanized steel to BS EN 10346 with a protective zinc coating of 275g/m².

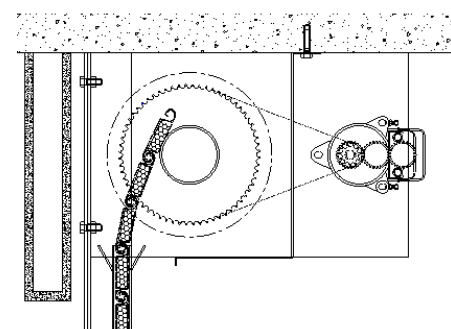
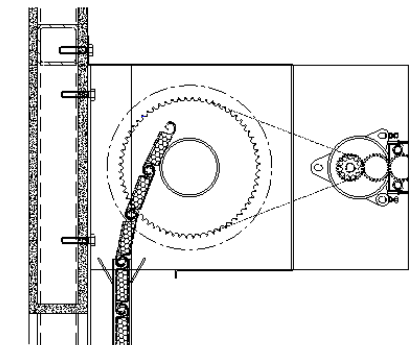
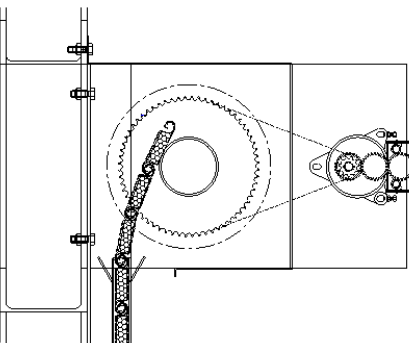
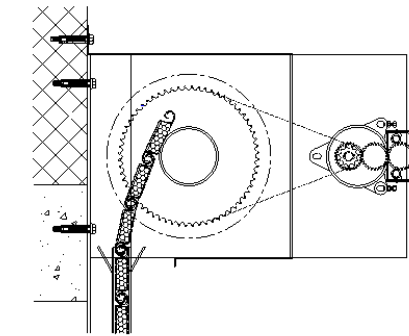
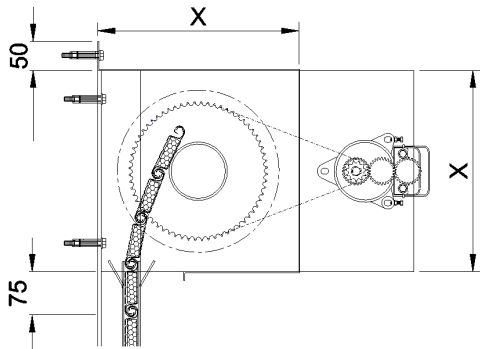
Finish - Galvanized parts to BS EN 10142 with a protective hot dipped zinc coating of 275g.m² finished to a normal spangle with one coat black primer paint on non-galvanized surfaces.

Optional Additional Extras -

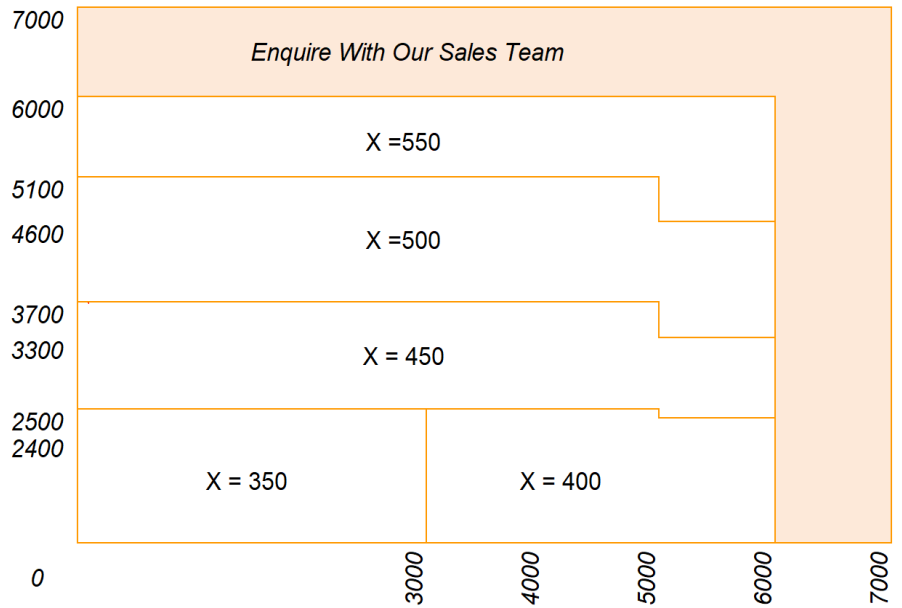
- Fascia
 - Motor hood (supplied as standard on all fire shutters under 2500mm high)
 - Audio visual warning panel
 - Repeater panel
 - Two stage descent
 - Smoke or heat detector
 - Key switch
 - Reflective photocell
 - Emergency retract button
-
- Powder coating to our standard RAL or BS range to curtain, guides, bottom rail and hood



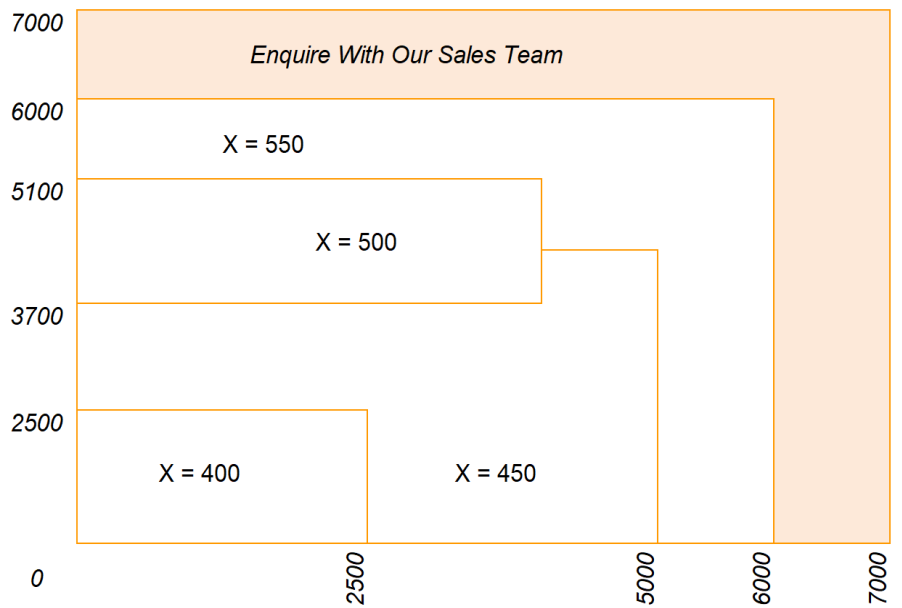
Head Box Detail



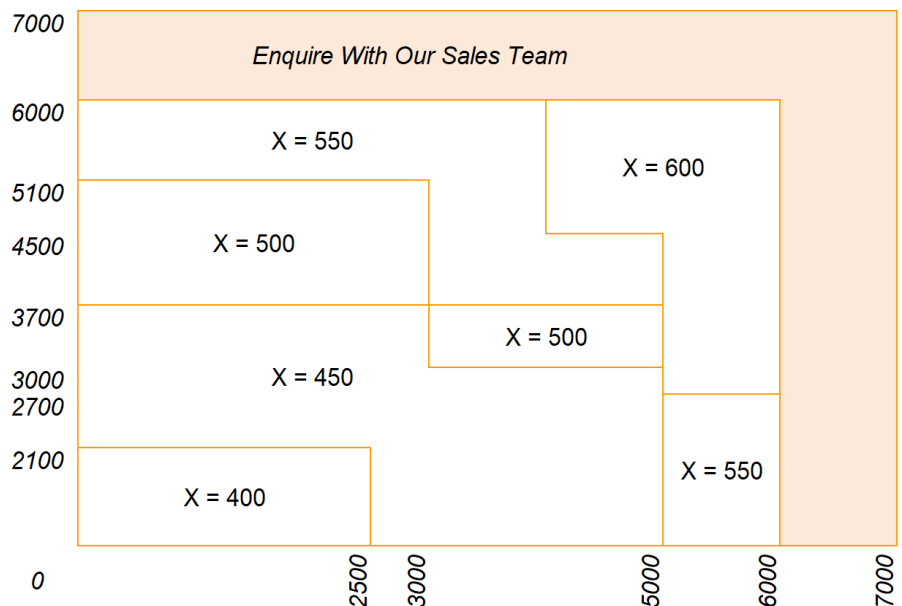
A234



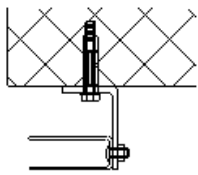
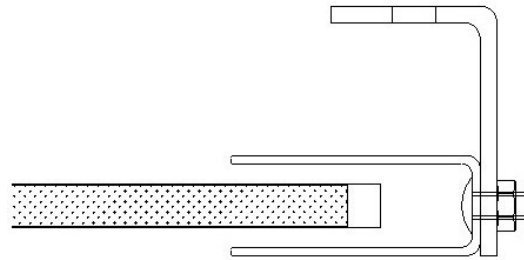
A235



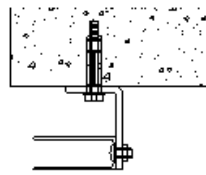
A236



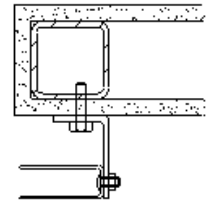
Jamb Guide Detail



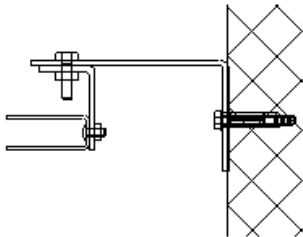
Masonry



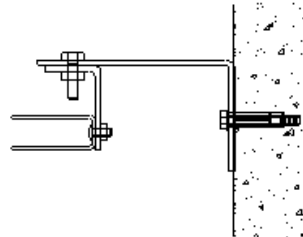
Concrete



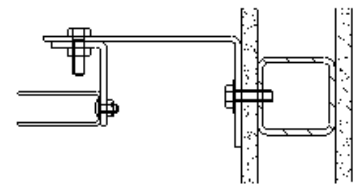
Fire Rated Plasterboard
c/w Internal Steel Post



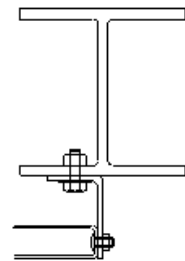
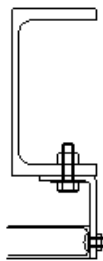
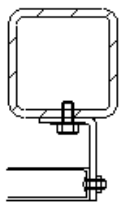
Hollow Section



Parallel Flange
Channel



Universal Column



**** Structural supporting steelwork must be fire protected in line with the required rating of the fire shutter ****